

Edgecore ECS4210, ECS4100 series

GE Access Networking Solution for ISPs, MSOs and SMB/Enterprises Networks



Overview

The Edgecore **ECS4100-28T/52T** switch is a Gigabit Ethernet access switch with four 1G uplink ports. The Edgecore **ECS4100-26TX/26TX-ME** is a Gigabit Ethernet access switch with two 10G uplink ports. These series switch is ideal for Internet Service Providers (ISPs) and Multiple System Operators (MSOs) to provide home users triple-play services with up to a Gigabit of bandwidth while **ECS4120** series offer the options of 4 x 10G uplink bandwidth. It is also an ideal Gigabit access switch for SMB, enterprise, and campus networks. The ECS4100 series switch is packed with features that bring high availability, comprehensive security, robust multicast control, and advance QoS to the network edge, while maintaining simple management. The switch also supports the most advance IPv6 management, IPv6 security, and IPv6 multicast control in accordance with the growth of IPv6 deployment. ISPs can expand their services from home to business users by providing a more reliable and resilient network (ITU-T G.8032 ERPS), L2 VPNs, and advanced OAM (Operations, Administration, and Maintenance) functions to ensure service-level agreements.

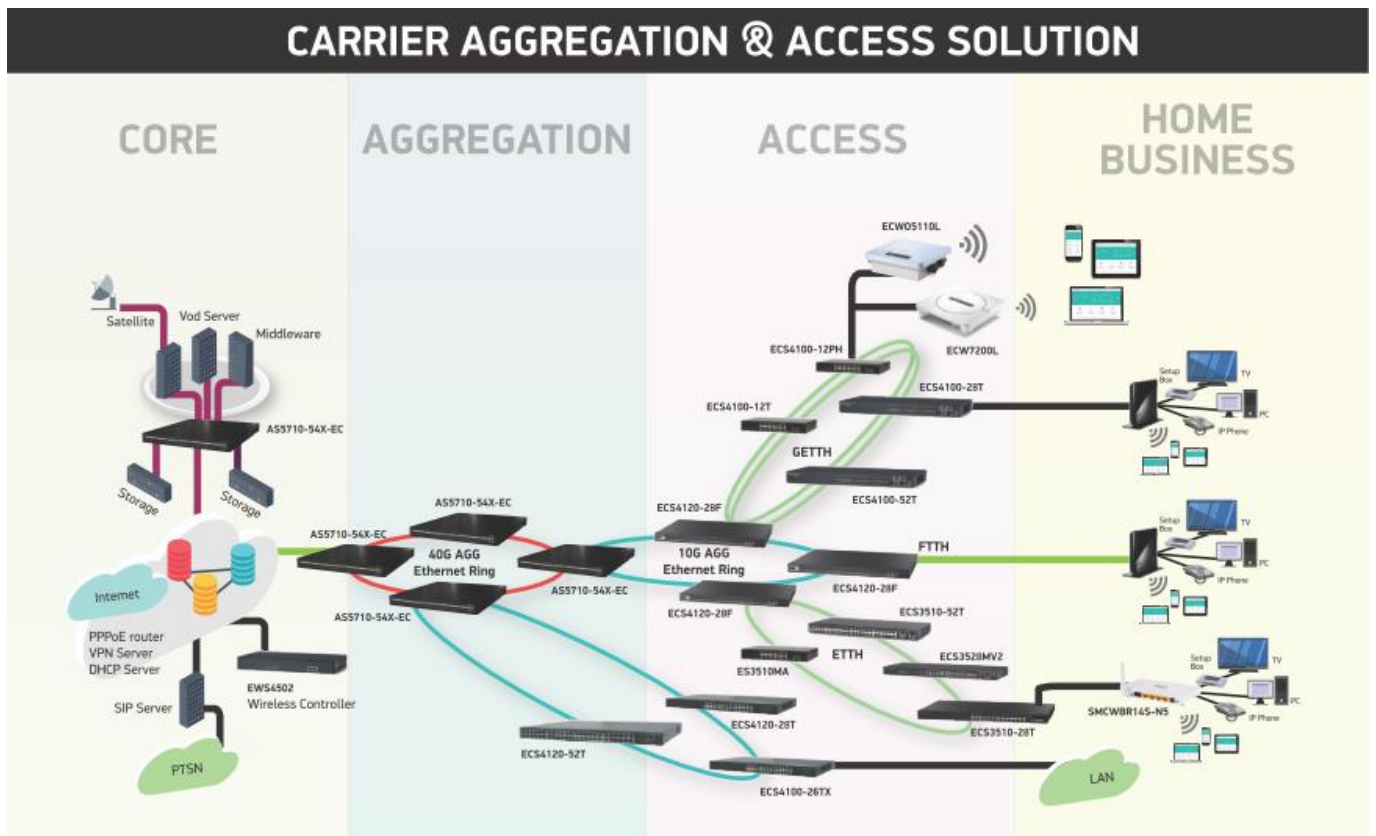
ECS4100 and ECS4120 Series model line

ECS4100-52T	Gigabit Access	48 x GE + 4 x SFP ports
ECS4100-28T	Gigabit Access	24 x GE + 4 x SFP ports
ECS4100-26TX	Gigabit Access	24 x GE + 2 x 10G SFP+ ports
ECS4100-26TX-ME	Gigabit Access	24 x GE + 2 x 10G SFP+ ports
ECS4120-52T	Gigabit Access/Aggregation	48 x GE + 4 x 10G SFP+ ports
ECS4120-28T	Gigabit Access/Aggregation	24 x GE + 4 x 10G SFP+ ports
ECS4120-28F	Gigabit Access/Aggregation	20 x GE SFP+ 4CG + 4 10G SFP+ ports
ECS4120-28P	Gigabit Access/Aggregation	24 x GE (PoE) + 4 x 10G SFP+ ports

FEATURES and BENEFIT

- Enhance robustness of multicast control to provide high quality IP-TV service via IGMP snooping, IGMP group, Multicast VLAN Registration (MVR)
- Ensure fully security of the services provider’s network against attack, offering port security limit, IEEE802.1X port-based or MAC-based access control, DHCP Snooping, IP Source Guard, Access Control List (ACL), Guest VLAN, Dynamic ARP Inspection (DAI), and SSH/SSL/HTTPS encrypt Telnet and Web access.
- Ease the management and troubleshooting with superior management, including industry-standard CLI, web interface, and SNMPv1, 2c, 3 and 4-group RMON.
- Differentiate network traffic and service with the advanced QoS features, such as Priority Queues, Traffic classification, Traffic scheduling, Rate Limiting
- Service providers can expand their business from home user to business user by providing more reliable and resiliency network (ITU-T G.8032 ERPS), Connectivity Fault Management (802.1ag, Y.1731) and ensuring SLA

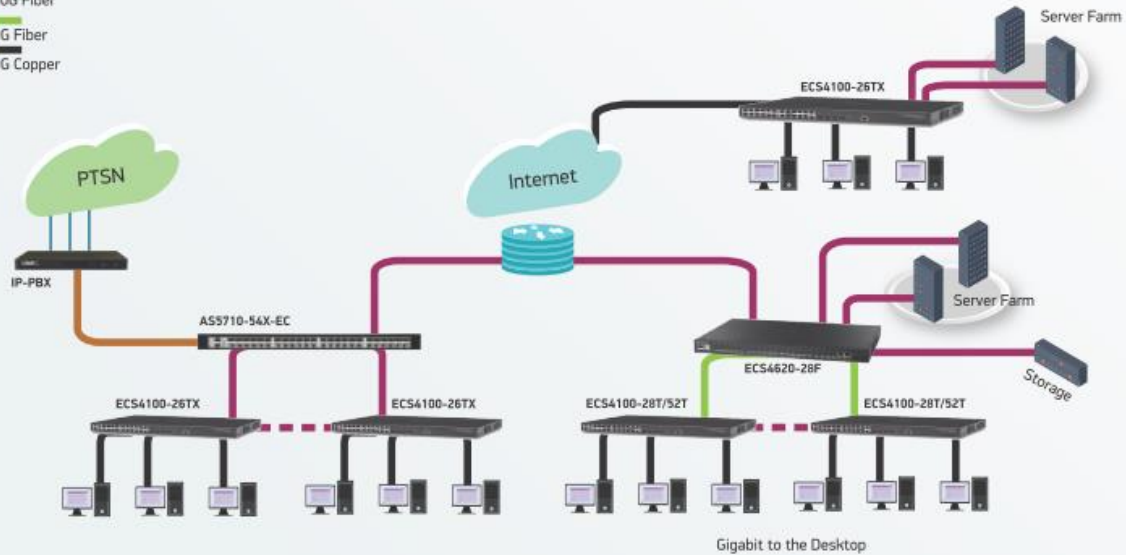
Network Application – Carrier Aggregation & Access Solution



GE WITH GE/10G UPLINK ACCESS SWITCH APPLICATION

Access switch of small-to-mid size networks
Branch office of enterprise
Campus workgroups

- 10G Fiber
- 1G Fiber
- 1G Copper



GE WITH 10G UPLINK ACCESS SWITCH APPLICATION

Access switch of small-to-mid size networks
Branch office of enterprise
Campus workgroups

- 10G Fiber
- 1G Fiber
- 100M Copper

